





## Table of contents

### Photo rights:

Morteratsch Alpine Cheese Dairy  
 ENGADIN St. Moritz Mountain Pool  
 Grand Hotel Kronenhof  
 Hotel Müller  
 Hotel Saratz  
 Pontresina Tourismus  
 PostBus  
 Ralf Gantzhorn  
 Rhaetian Railway  
 SALEWA Sport AG  
 SVIT Schweiz

Rondo / Pontresina / Engadin St. Moritz	3
Enjoy the journey to Pontresina	4
Overview of Rondo	6
Services / Catering	8
Ground floor	9
First floor	10
Second floor	12
Third floor	13
Accommodation / Cuisine	14
Leisure time	15
Wellbeing and relaxation / Culture and tradition	16
Exceptional Locations	17

## Rondo: Conventions. Meetings. Events.

Of course many conference centres exist. But do you know of a single one that lies at the foot of a glacier? Surrounded by an impressive mountain panorama? With 1001 options to choose from for your alpine leisure time? This is exactly what the Rondo Convention and Event Centre has to offer. Plenty to make your particular seminar, convention or event a truly memorable one.

## Pontresina: Alpine. Natural. Authentic.

Pontresina is considered one of the most appealing holiday and meeting destinations in the Alps. It lies at 1800 m a.s.l., in a wind-protected side valley of the Upper Engadin. Its guests come to recharge their batteries – in the pure, dry air, the agreeable climate and the 300 days of sun it has to offer each year. Pontresina lies at the foot of three glaciers and Piz Bernina (4049 m a.s.l.). All year long it presents a true experience of nature and innumerable opportunities to enjoy culture, sports, relaxation and a mountain lifestyle. In short: Pontresina is the perfect platform for your event.

## Engadin St. Moritz: What mountains. What space. What light!

The breathtaking panorama, the sheer endless expanse of the Engadin's lake-spotted valley and the incomparable light. Exceptional features that never fail to seduce those visiting the region of Engadin St. Moritz. Add to this exclusive, cosmopolitan and glamorous St. Moritz and the original natural surroundings of the Upper Engadin, and you have a truly unique combination. Sports, culture and wellness options abound, providing the most varied pastimes for both business and individual travellers. All this combined is what makes Engadin St. Moritz the ideal destination for meetings, incentives and conventions.



## Enjoy the journey to Pontresina

Many roads lead to Pontresina. They all have one thing in common – they are spectacularly scenic, and as such a fitting start to your programme at Rondo. See for yourself!

### Arriving by train

The Swiss Federal Railways SBB/CFF bring you comfortably and dependably from the transit hub of Zurich to Chur on modern «Intercity» trains. Then, from the Canton Grisons' capital city onwards, you will begin to do your rounds. With its winding tunnels and dizzying viaducts, the Rhaetian Railway routes leading into the Upper Engadin are among the most interesting and picturesque in all of Europe. The UNESCO World Cultural Heritage label and famous railway classics such as the «Glacier Express» and the «Bernina Express» are proof in point. Extra rides or special panorama or nostalgia cars can be booked on request – catering, too. Incidentally: with the Rhaetian Railway's «Congress Ticket», meeting participants benefit from reduced fares from any train station in Switzerland to the Engadin.



### Travel times

City	Distance (in km)	Car (in h)	Train (in h)
Zurich	200	2.30	3.30
Basel	290	3.30	4.30
St. Gallen	190	2.30	4.00
Geneva	480	6.00	6.30
Lugano	125	2.30	4.00
Milan	175	2.30	4.30
Florence	470	5.30	8.00
Munich	300	4.00	6.30
Stuttgart	390	4.30	7.00
Frankfurt	590	6.00	8.00
Innsbruck	190	2.30	5.00
Salzburg	370	4.00	7.30
Paris	860	9.00	8.30

### Arriving by car

A good alpine road network puts Pontresina within easy and comfortable reach of Northern Switzerland, the Ticino, Italy or Austria. Good to know: the Convention and Event Centre Rondo has its own parking garage with 180 spaces.

### Arriving by plane

Convention and seminar venues must be quick and easy to get to, also by air. The Engadin is home to Europe's highest-altitude airport – and customs services. Engadin Airport, and thus the destination Engadin St. Moritz, in fact also offers international flight connections. And the bird's eye view of the Engadin when flying over its majestic alpine peaks and passes is a memorable experience indeed. Flights are operated from the international airports of Zurich, Geneva, Milan and Munich. Air taxis can be booked for numerous other national or international connections to the Engadin.





## Overview of Rondo

### Flexibility at the highest-altitude convention centre in Europe

Rondo offers state-of-the-art and multi-purpose infrastructure that meets the highest expectations. A large auditorium, seven seminar rooms and three foyers are available to accommodate both smaller or medium-sized meetings, conventions or cultural events and banquets. Pontresina's majestic glacier and mountain world lies at Rondo's feet. The view from all of Rondo's rooms is quite phenomenal.

### Rondo facilities

Room / Floor		Surface in m (L x W x H)			Floor space in m <sup>2</sup>	Concert	Seminar	U-style	Banquet, long tables	Banquet, round tables	Reception
Foyer	GF	14.02 x	6.45 x	3.00	101						60
Sela Roseg	GF	7.38 x	4.48 x	3.00	33	30	12	16			30
Convention office	GF	4.83 x	4.48 x	3.00	22						
Back office	GF	4.00 x	5.17 x	3.00	21						
Forecourt ★	GF	26.00 x 13.00			338				200		600
Sela Arabella	1 <sup>st</sup> Fl.	20.05 x	17.13 x	9.00	343	460	190	req.	252	176	480
Foyer	1 <sup>st</sup> Fl.	16.44 x	6.49 x	2.85	107	100			48	40	150
Sela Muragl	1 <sup>st</sup> Fl.	7.79 x	5.94 x	2.85	44	30	12	18			
Sela Laret	1 <sup>st</sup> Fl.	6.36 x	5.94 x	2.85	38	30	12	15			
Sela Murgal - Laret	1 <sup>st</sup> Fl.	14.15 x	5.94 x	2.85	82	75	34	30	60	32	
Sela San Spiert	2 <sup>nd</sup> Fl.	7.79 x	5.99 x	2.60	44	30	12	15			
Sela Garsun	2 <sup>nd</sup> Fl.	6.36 x	5.99 x	2.60	38	30	12	15			
Sela San Spiert - Garsun	2 <sup>nd</sup> Fl.	14.15 x	5.99 x	2.60	82	75	34	30	60	32	
Foyer	2 <sup>nd</sup> Fl.	15.53 x	8.29 x	2.60	129	110			90	48	170
Sela Morteratsch	2 <sup>nd</sup> Fl.	12.78 x	8.29 x	2.60	106	100	54	42			
Galeria Salomé	2 <sup>nd</sup> Fl.	15.15 x	2.40		36	41					
Sela Pulcinella	3 <sup>rd</sup> Fl.	7.09 x	9.40 x	2.50	67	55	34	20			50
Foyer	3 <sup>rd</sup> Fl.	2.72 x	7.60 x	2.50	21						10

★ Mobile tent available on request req. = on request

## Architecture

Rondo is characterized by its timeless architecture that is both remarkably simple and consistently functional. Its facade, made of natural quartzite from Soglio, conveys the rugged force of the mountains. The facade is like a living picture gallery, offering ever-changing views of the beautiful landscapes without. The rooms are pleasantly spacious and bright – all with natural daylight. Thanks to its special ceiling construction, Rondo's main auditorium, «Sela Arabella», is widely appreciated for its excellent acoustics.



## Technical infrastructure

Rondo offers state-of-the-art technical infrastructure. This comprises, for example, simultaneous translation booths, modern projection equipment and a comprehensive lighting system. Also available: wifi and an IT-network for 50 Mbps synchronized up/downloading that can be expanded on request to 120 Mbps. For flexibility's sake, there are numerous IT, electrical and phone outlets throughout the building. Thanks to its excellent technical infrastructure, Rondo is also well adapted for use as a media centre at large-scale events. A built-in hoisting platform facilitates the delivery of conference equipment and even cars. The forecourt and three spacious foyers are ideal for exhibitions and product presentations.





## Services

### Convention and Meetings Services

An experienced convention and meetings team is on site to assist you – from the moment of your first inquiry to after the last delegate has left. To make your event the highlight you want it to be. In line with our motto – Rondo makes everything possible.

### Technical know-how

Do you need even more equipment than we at Rondo can offer? We also work with reputable partners specialised in event installations to realise extraordinary promotional events.



### Engadin St. Moritz Convention Services

How to find just the right accommodation or the ideal outdoor or evening programme? It's easy to get lost in the maze of opportunities on offer in the Engadin. The regional office, Engadin St. Moritz Convention Services of the Engadin St. Moritz tourism organisation is your contact point for all aspects of the meetings business. In collaboration with the local event agencies, they will help to make complex team-building events and incentives a great success.



## Catering

Rondo's catering team is your guarantee for professional and creative catering for any type of event. The offer ranges from tempting morning pastries to tailored business or standing lunches, special receptions and gala dinners.

Regional produce from environmentally sustainable production preferred. The cuisine is authentic and suited to the local setting.

## Ground floor

The following rooms are located on the ground floor: the entrance area and the foyer, the smallest seminar room, Sela Roseg, the convention office and the cloakroom. In a side corridor there are toilets and storage rooms, a back office and two artists' cloakrooms with direct access to the stage. The tourism service centre is also located on this floor.

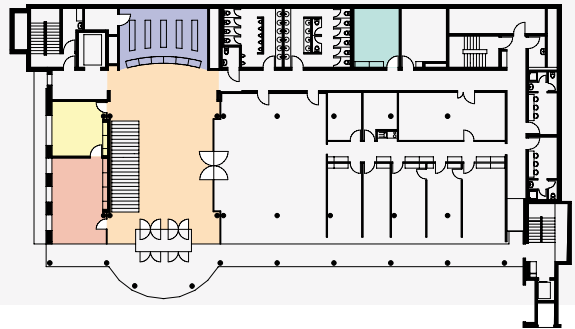


### Foyer

A spacious entrance area can be used as exhibition space. A 40-inch movable screen is available as an information panel. The far area with coat racks is perfect for convention registration.

### Sela Roseg

It is ideal as a meeting or breakout room, or as a small media centre.



## Technical infrastructure and facilities

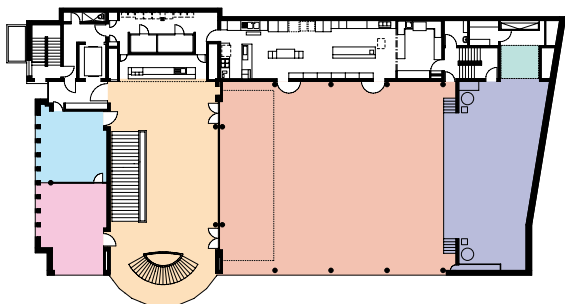
Room / Floor	Surface in m (L x W x H)			Floor space in m <sup>2</sup>													
					Concert	Seminar	U-style	Banquet, long tables	Banquet, round tables	Reception	Standing concert	Stage / Podium	Computer or video projection	Overhead projection	Projection screen	Sound system	Simultaneous translation
Foyer	GF	14.02 x	6.45 x	3.00	101					60	▲	▲	▲	▲		●	
Sela Roseg	GF	7.38 x	4.48 x	3.00	33	30	12	16		30		▲	▲	■	▲	●	●
Cloakroom	GF	4.43 x	7.80 x	2.65	35												
Convention office	GF	4.83 x	4.48 x	3.00	22												
Back office	GF	4.00 x	5.17 x	3.00	21												
Forecourt ★	GF	26.00 x 13.00			338					200	600						

★ Mobile tent available on request ▲ mobile installation ■ fixed installation ● can be rented on request

## First floor

### ■ «Sela Arabella» auditorium

Rondo centres on its «Sela Arabella» auditorium, which offers a grandiose view of the Roseg Valley's glaciers. The spacious room is ideally suited for conventions, meetings, banquets and other events. With its large stage, extendable on request by a catwalk, and its comprehensive technical installations, it is equally well adapted for product presentations and shows. And just as important: the suspended wooden ceiling construction provides excellent acoustics. Classical concerts at the «Sela Arabella» benefit from the «heavenly» sound. Counting the «Galeria Salomé», «Sela Arabella» has a maximum seating capacity of 500 in conference style, or 190 in schoolroom style. The kitchen is located directly behind the auditorium. The great advantage: fast banqueting service for up to 250 persons. And when even more guests are expected, the back wall can be opened up to include the Foyer.



### Specifics:

- › High windows the full length of the room looking out onto nature, with blackout blinds
- › Wooden flooring
- › Built-in sound booth
- › Three built-in simultaneous translation booths
- › Dimmable lighting, «starry heaven»
- › Flexible stage lighting
- › Large projection screen (projection surface of 7 x 4 m)
- › Full-surface back-projection roll screen on the stage
- › Hoisting platform
- › Direct stage access from two artists' cloakrooms
- › Movable back wall

### ■ ■ «Muragl» and «Laret» seminar rooms

«Muragl» and «Laret» can be booked separately as individual seminar rooms or – with the dividing wall removed – as one double-sized room. At larger meetings they can be used as breakout rooms or exhibitors' lounges. The rooms are equipped with blackout blinds for the full window front, dimmable ceiling lighting and a projection screen.

### ■ Foyer

The main staircase leads directly into the Foyer with its room-high window front. A good place to enjoy coffee breaks and drinks. With the Bar located just behind, an ideal place for networking. And: prime display space is available directly in front of the auditorium entrance.



## Technical infrastructure and facilities

Room / Floor	Surface in m (L x W x H)	Floor space in m <sup>2</sup>	Concert	Seminar	U-style	Banquet, long tables	Banquet, round tables	Reception	Standing concert	Stage / Podium	Computer or video projection	Overhead projection	Projection screen	Sound system	Simultaneous translation (booths)	Lighting system
<b>«Sela Arabella» auditorium</b>																
■ Sela Arabella	1 <sup>st</sup> Fl. 20.05 x 17.13 x 9.00*	343	460	190	req.	252	176	480	900	■	▲	▲	■	■	■	■
■ Galeria Salomé	2 <sup>nd</sup> Fl. 15.15 x 2.40	36	41													
■ Stage	1 <sup>st</sup> Fl. 7.35 x 11.25 x 5.00	83				48	40									■
■ Hoisting Plattform	1 <sup>st</sup> Fl. 3.50 x 2.74 x 3.45	10														
■ Foyer	1 <sup>st</sup> Fl. 16.44 x 6.49 x 2.85	107	100			48	40	150		▲	▲	▲	▲	■		●
<b>Seminar rooms</b>																
■ Sela Muragl	1 <sup>st</sup> Fl. 7.79 x 5.94 x 2.85	44	30	12	18						▲	▲	■	▲	●	●
■ Sela Laret	1 <sup>st</sup> Fl. 6.36 x 5.94 x 2.85	38	30	12	15						▲	▲	■	■	●	●
■ Sela Muragl-Laret	1 <sup>st</sup> Fl. 14.15 x 5.94 x 2.85	82	75	34	30	60	32			▲	▲	▲	■	■	●	●

★ height to the gallery = 2.85 m req. = on request ▲ mobile installation ■ fixed installation ● can be rented on request

## Second floor

Apart from the «San Spiert» and «Giarsun» seminar rooms and a foyer, access to the «Galeria Salomé» of «Sela Arabella», the sound and simultaneous translation booths, and toilets are on this floor.

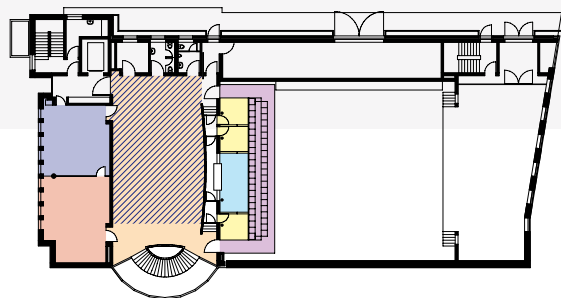
**■ ■ «San Spiert» and «Giarsun» seminar rooms**  
«San Spiert» and «Giarsun» can be booked separately as individual seminar rooms or – with the dividing wall removed – as one double-sized room. At larger meetings they can be used as breakout rooms or exhibitors' lounges. The rooms are equipped with blackout blinds for the full window front, dimmable ceiling lighting and a projection screen.

### ▨ ■ Sela Morteratsch / Foyer

At larger events, «Sela Morteratsch» is an ideal exhibition area. It offers room for coffee breaks and is thus a choice networking spot. The Foyer can be turned into a meeting room by closing the



frosted-glass wall and the side walls. «Sela Morteratsch» can also be used on its own for talks or presentations. Or at conventions as an additional, somewhat larger breakout room. It is equipped with dimmable wall and ceiling lighting.



## Technical infrastructure and facilities

Room / Floor		Surface in m (L x W x H)			Floor space in m <sup>2</sup>	Concert	Seminar	U-style	Banquet, long tables	Banquet, round tables	Reception	Standing concert	Stage / Podium	Computer or video projection	Overhead projection	Projection screen	Sound system	Simultaneous translation	Lighting system
■ Sela San Spiert	2 <sup>nd</sup> Fl.	7.79 x	5.99 x	2.60	44	30	12	15						▲	▲	■	▲	●	●
■ Sela Giarsun	2 <sup>nd</sup> Fl.	6.36 x	5.99 x	2.60	38	30	12	15						▲	▲	■	■	●	●
■ Sela San Spiert-Giarsun	2 <sup>nd</sup> Fl.	14.15 x	5.99 x	2.60	82	75	34	30	60	32			▲	▲	▲	■	■	●	●
■ Foyer	2 <sup>nd</sup> Fl.	15.53 x	8.29 x	2.60	129	110			90	48	170		▲	▲	▲	▲	■		●
▨ Sela Morteratsch	2 <sup>nd</sup> Fl.	12.78 x	8.29 x	2.60	106	100	54	42					▲	▲	▲	▲	■	●	●
■ Galeria Salomé	2 <sup>nd</sup> Fl.	15.15 x	2.40		36	41													

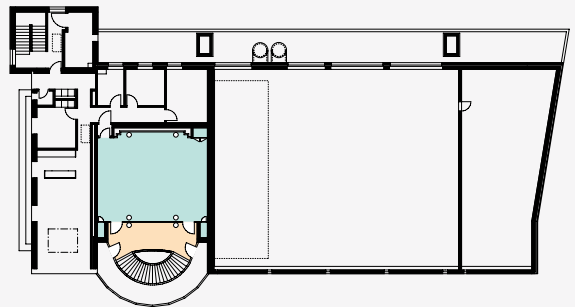
■ Sound booth ■ Simultaneous translation booths ▲ mobile installation ■ fixed installation ● can be rented on request

## Third floor

The third floor is appreciated for its light-metal ceiling construction and small terrace. The perfect spot for a regenerating break in the sun and a view of the town of Pontresina and surrounding mountain panorama. Floor 3 is accessible only by the staircase.

### ■ «Sela Pulcinella»

The uppermost room, «Sela Pulcinella» is Rondo's little gem. It is flooded with daylight, has dimmable wall and ceiling lighting and a built-in sound system. Together with its small foyer, «Sela Pulcinella» is the perfect retreat. For small events it is a pleasant plenary room, for larger conventions an ideal breakout room.



### Technical infrastructure and facilities

Room / Floor	Surface in m (L x W x H)	Floor space in m <sup>2</sup>	Concert	Seminar	U-style	Banquet, long tables	Banquet, round tables	Reception	Standing concert	Stage / Podium	Computer or video projection	Overhead projection	Projection screen	Sound system	Simultaneous translation	Lighting system
■ Sela Pulcinella	3 <sup>rd</sup> Fl. 7.09 x 9.40 x 2.50	67	55	34	20			50		▲	▲	▲	■	■	●	●
■ Foyer	3 <sup>rd</sup> Fl. 2.72 x 7.60 x 2.50	21						10								●

▲ mobile installation ■ fixed installation ● can be rented on request



## Accommodation

Rondo is at a mere two to five minutes' walk from most of Pontresina's hotels. Pontresina has a renowned hotel tradition to look back on, and a wide range of accommodation to offer – from simple lodge to luxurious five-star hotel. In all, there are 2400 beds, respectively 1200 rooms available. Within 10 kilometres' distance there are a further 6700 hotel beds in St. Moritz, Celerina and Samedan. The destination Engadin St. Moritz comprises a total of around 12 700 hotel beds that are located at no more than 30 minutes by car from Rondo.

### Room capacities at the hotels

	Pontresina		Within 10 km		Destination Engadin St. Moritz	
	Rooms	Beds	Rooms	Beds	Rooms	Beds
5*-Hotels	114	200	874	1603	1014	1863
4*-Hotels	296	565	1121	2069	1449	2675
3*-Hotels	396	700	931	1672	1574	2895
2*-Hotels	138	231	481	861	494	916
Other	234	745	1236	2928	2021	4324
<b>Total</b>	<b>1178</b>	<b>2441</b>	<b>4643</b>	<b>9133</b>	<b>6552</b>	<b>12 673</b>



## Cuisine

Pontresina has a great range of culinary delights to offer the epicure. From gourmet restaurant to the typical, rustic «Bünderstube»; right at the town centre, atop one of the majestic peaks, or in the romantic Val Roseg. So wide is the variety that it is hard to choose between local Grisons specialties, Asian or Italian creations, or the full array of international cuisine. Diversity characterises the ambience as well – whether deluxe hotel, cosy Engadin «Stube» or modern and cosmopolitan setting – nothing is lacking.



## Leisure time

In summer, 580 kilometres of hiking and 400 km of biking trails run through and around Pontresina, before an imposing alpine panorama. Meeting participants have their choice of a huge variety of leisure opportunities – three high-altitude golf courses, fixed rope routes, glacier hiking, spas, bathing in mountain lakes, wine and food tastings, horse-drawn carriage rides and more – to ensure pleasant after-work entertainment.

In winter, Engadin St. Moritz is transformed into the largest snow sports region in Switzerland – with 350 km of runs, 56 mountain railways and lifts, 190 km of cross-country skiing tracks, and 150 km of winter hiking trails. For those who need even more options, there is also curling, an adventurous snowshoe tour in untouched nature or a racing sledging ride down Muottas Muragl.



## Wellbeing and relaxation

«Alpine Wellness» is a fixture in Pontresina – the Bellavita Pool and Spa with its indoor and outdoor pools and resting oasis, and the various hotels with their modern and spacious wellness centres are the perfect place to relax after a busy day.

## Culture and tradition

Solid Engadin houses decorated with sgraffiti, Sta. Maria Church with its Roman-Byzantine frescoes, the pentagonal Spaniola Tower, numerous art galleries and the Museum Alpin bear witness to Pontresina's age-old culture and tradition. And there's even music in the wilderness at Tais, where a forest clearing regularly serves in summer as a stage to classical concerts. Jazz and other more modern tones are featured at the «in» bar, Pitschna Scena and excellent pianists at the various hotels.

## Exceptional Locations

### Diavolezza

3000 m a.s.l., peaceful silence, and 100% pure mountain air are automatically part of what you get on Diavolezza. Plus a mountain lodge that offers cosy rooms and dormitories before the glacier backdrop of the Bernina range – panoramic view and outdoor jacuzzi inclusive. Not even the pleasant half-moon of a restaurant can hold one's attention, what with the amazing views of the Pers and Morteratsch Glaciers, the Piz Palü and Piz Bernina to marvel at as well. Gondolas will take you on a safe ride there and back again, by prior booking also at night.

### Alp Languard

In a mere fifteen minutes, a chairlift takes you in summer right from the town centre up to beautiful Alp Languard. Encounter ibex and marmots, and enjoy the view from the terrace and the restaurant with its charmingly rustic atmosphere.



### Muottas Muragl

Twelve minutes on the Muottas Muragl mountain railway and you will find yourself at one of the Engadin's most scenic lookout points. From here, the whole lake-spotted Engadin valley unfolds before your eyes. The fine panoramic restaurant serves local specialities at 2456 m a.s.l. – alpine dining in harmony with the Engadin's mountain world.

### Val Roseg

For a particularly romantic moment, immerse yourself in the solitude of the wilderness in the larch and stone pine forests of the Val Roseg. In the realm of the hares and the deer. The Hotel Restaurant Roseg Gletscher offers a large dormitory and a few simple rooms. Drinks on the terrace or in front of the warming fireplace, tasty regional delicacies and a dessert buffet fit for a king – many are the treats on offer. Arrive in a horse-drawn carriage or on foot. Or in summer on a mountain bike or electric cycle, in winter on cross-country skis.





### **Special Rhaetian Railway cars**

The Rhaetian Railway's special cars make a journey unforgettable – whether on arrival or on an excursion. You have nostalgic, rustic or contemporary-panoramic cars to choose from. Add to this a venue like Alp Grüm and a full moon, and a truly special evening is yours. To start with, some fine, rustic dining on Alp Grüm, followed by a magical journey across a moonlit landscape in panoramic cars that take you over the Bernina Pass to Pontresina – a star-studded highlight you're not likely to forget.



### **Morteratsch Alpine Cheese Dairy**

The quintessential alpine experience! Look over the cheese maker's shoulder as he creates alpine cheese, Pontresina-style. And if you wish, you can even assist. Enjoy the fresh produce at an alpine brunch, or a fondue or raclette dinner in the evening. Morteratsch Alpine Cheese Dairy is located some 5 km from Pontresina's town centre, easily accessible on foot, mountain bike, or by train or bus.



### **Ice rink**

Bavarian or traditional curling are the favourite sports on Pontresina's ice rinks, often to the accompaniment of some warming mulled wine. The ice rink is of course open to ice hockey cracks and skaters as well.

### **Wine cellar at the Grand Hotel Kronenhof**

With its original wooden vats, the Valtellina wine cellar that Lorenz Gredig created in 1867 is one of the Engadin's most picturesque. It is divided into three levels with various enclaves, and as such a perfect venue for larger receptions, wine tastings and other special gatherings.

### **Museum Alpin**

This stately Engadin house that dates back to 1716 conveys the original atmosphere of a period Engadin home. Hold a drinks reception here and your guests will travel back in time as they saunter through the historic rooms, pausing at will at the various commented exhibitions on mining, mountaineering and minerals.

### Convention of Radiologists

«Rondo's exceptional atmosphere with its amazing mountain views. The professional infrastructure and personal attention of the convention team. This is what brings some 300 persons from Switzerland, Austria and Germany to the Radiology Convention in Pontresina year upon year. For the past 10 years, and despite bigger, international conventions in Chicago, Berlin and Vienna.»

Adrian Steiner, Organiser, Convention of Radiologists

### Forum Train Europe (FTE)

«Europe has many other more centrally-located and quickly accessible convention venues than Pontresina. But the diligent event preparation, excellent infrastructure with high-speed internet and overall good value for money are why FTE chooses to run its events in Pontresina. Staff at Rondo and the hotels in Pontresina are helpful and friendly, the family-run hotels are comfortable and tastefully decorated, and the beautiful views of Val Roseg further contribute to the events' success.»

Peter Jäggy, Secretary General, FTE

### SVIT Schweiz

«The Convention and Event Centre Rondo in Pontresina and the SVIT Real Estate Forum – a successful partnership of several years. Everything fits at Rondo – the ambience, the infrastructure and the competent, service-oriented event management. And this amidst Switzerland's most beautiful alpine landscape, with an outstanding hotel offer to top it off. Pontresina and Rondo are the venue of choice for SVIT Schweiz.»

Tayfun Celiker, Director, SVIT Schweiz

### Mammut Sports Group AG

«As a well-known mountaineering destination, Pontresina epitomises the Swiss mountain feeling we want to convey. Superior technical infrastructure is essential for us. This and much more is what we find at the Convention and Event Centre Rondo. The lighting system is ideal for product presentations. Technical support is excellent and the friendliness at the hotels an additional plus.»

Michael Gyssler, Head of Marketing, Mammut Sports Group AG



OLIVIERO TOSCANI

## Rondo

Convention and Event Centre

Convention and Event Centre Rondo  
Convention and Meetings Services

Via Maistra  
CH-7504 Pontresina

Phone +41 (0)81 838 83 18  
Fax +41 (0)81 838 83 10

[congress@pontresina.ch](mailto:congress@pontresina.ch)  
[www.pontresina-congress.ch](http://www.pontresina-congress.ch)



Engadin St. Moritz  
Convention Services

Via San Gian 30  
CH-7500 St. Moritz

Phone +41 (0)81 830 08 13  
Fax +41 (0)81 830 08 18

[mice@estm.ch](mailto:mice@estm.ch)  
[www.engadin.stmoritz.ch](http://www.engadin.stmoritz.ch)

